

## Working In the Coal Mine

Allen Toussaint

♩=140

Drums set 1966 NOLA Lee Dorsey Groove

## Add Bass

Alto 1

Alto 2

Tenor 1

Tenor 2

Bari

Trumpet 1

Trumpet 2

Trumpet 3

Trumpet 4

Trombone 1

Trombone 2

Trombone 3

Sousaphone

Rhythm

*mf* Drums continue groove throughout

Arrangement Copyright © 2017 Edward Petersen/Roving Bovine Music-ASCAP

## 2

2

9

**A**

Piano/Gt Comp

## Working In the Coal Mine...Concert Score

17 **B**

Alto 1

Alto 2

Tenor 1

Tenor 2

Bari

Tpt. 1

Tpt. 2

Tpt. 3

Tpt. 4

Tbn. 1

Tbn. 2

Tbn. 3

Sousa

Rhy.

*f*

F7 Bb F7 Bb F7 Bb F7

Piano/Gt Comp

33 D

Alto 1

Alto 2

Tenor 1

Tenor 2

Bari

Tpt. 1

Tpt. 2

Tpt. 3

Tpt. 4

Tbn. 1

Tbn. 2

Tbn. 3

Sousa

Rhy.

Bb F7 Bb F7 Bb Bb13 A13(+9) D7(+9) DbA7 Gb7(+9) B/F

Piano/Gt Comp

49

F

Alto 1



Alto 2



Tenor 1



Tenor 2



Bari



Tpt. 1



Tpt. 2



Tpt. 3



Tpt. 4



Tbn. 1



Tbn. 2



Tbn. 3



Sousa



Rhy.



B $\flat$ 7(sus4)

G $\sharp$ 13(b9)

G $\flat$  $\Delta$ 7

F-7

E $\Delta$ 7(b5)

E $\flat$ 7(sus4)

D7( $\sharp$ 9 $\flat$ 5)

f

Piano/Gt Comp

## 8

Piano/Gt Comp



65

H

Alto 1



Alto 2



Tenor 1



Tenor 2



Bari



Tpt. 1



Tpt. 2



Tpt. 3



Tpt. 4



Tbn. 1



Tbn. 2



Tbn. 3



Sousa



Rhy.



G-7

E7(+9)

EbΔ7

D+7(+9)

DbΔ7

C7(sus4)

B7(+9)

BbΔ7(#5)

A7(+9)

Ab7

G-11

Gb7(+9)

B/F

ff

Drum fill

Drum fill

Drum fill

73

I

Alto solo-Open

Alto 1							
Alto 2	Bb7(sus4)	G13(b9)	GbΔ7	F-7	EΔ7	Eb7(sus4)	D7(+9)
Tenor 1							
Tenor 2							
Bari							
Tpt. 1							
Tpt. 2							
Tpt. 3							
Tpt. 4							
Tbn. 1							
Tbn. 2							
Tbn. 3							
Sousa							
Rhy.	Bb7(sus4)	G13(b9)	GbΔ7	F-7	EΔ7	Eb7(sus4)	D7(+9)

81

J

Alto 1

Alto 2

G-7

E7(+9)<sub>+5</sub>

E♭Δ7

D7(+9)

D♭Δ7

C7(sus4)

B7(+9)<sub>+5</sub>

E-11

E♭7(sus4)

E♭Δ7(♯11)

Tenor 1

Tenor 2

Bari

Tpt. 1

Tpt. 2

Tpt. 3

Tpt. 4

Tbn. 1

Tbn. 2

Tbn. 3

Sousa

Rhy.

G-7

E7(+9)<sub>+5</sub>

E♭Δ7

D7(+9)

D♭Δ7

C7(sus4)

B7(+9)<sub>+5</sub>

E-11

E♭7(sus4)

E♭Δ7(♯11)

89

Alto 1

Alto 2

Tenor 1

Tenor 2

Bari

Tpt. 1

Tpt. 2

Tpt. 3

Tpt. 4

Tbn. 1

Tbn. 2

Tbn. 3

Sousa

Rhy.

Bb7(sus4) G13(b9) Gb7 F-7 E7 Eb7(sus4) D7(+9)

mp

K

97

L

Alto 1

*f*

G-7 E7(+9) EbΔ7 D7(+9) DbΔ7 C7(sus4) B7(+9) E-11 Eb7(sus4) EbΔ7(#11)

Alto 2

Tenor 1

*f*

Tenor 2

*f*

Bari

Tpt. 1

Tpt. 2

Tpt. 3

Tpt. 4

Tbn. 1

*f*

Tbn. 2

*f*

Tbn. 3

Sousa

Rhy.

*f*

105

M

Alto 1

Alto 2

Tenor 1

Tenor 2

Bari

Tpt. 1

Tpt. 2

Tpt. 3

Tpt. 4

Tbn. 1

Tbn. 2

Tbn. 3

Sousa

Rhy.

*f* *mf* *f* *mf* *f* *mf* *f* *mf* *f* *mf* *f* *mf* *f* *mf*

B $\flat$ 7(sus4) G13(b9) G $\flat$ A7 F-7 E $\Delta$ 7 E $\flat$ 7(sus4) D7(+ $\frac{9}{5}$ )

B $\flat$ 7(sus4) G13(b9) G $\flat$ A7 F-7 E $\Delta$ 7 E $\flat$ 7(sus4) D7(+ $\frac{9}{5}$ )

113

N

Alto 1

*f*

G-7 E7(+9) EbΔ7 D7(+9) DbΔ7 C7(sus4) B7(+9) E-11 Eb7(sus4) EbΔ7(#11)

Alto 2

*f*

Tenor 1

*f*

Tenor 2

*f*

Bari

*f*

Tpt. 1

*f*

Tpt. 2

*f*

Tpt. 3

*f*

Tpt. 4

*f*

Tbn. 1

*f*

Tbn. 2

*f*

Tbn. 3

*f*

Sousa

*f*

Rhy.

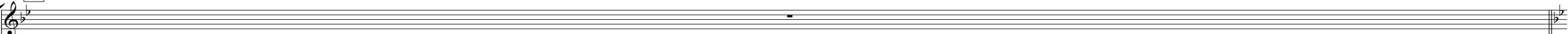
*f*

16 121 

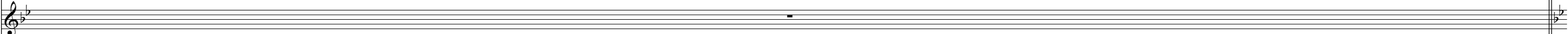
O

 Time stops...Jeronne says: "I'm so tired...How long can this go on?"


Alto 1



Alto 2




Tenor 1



Tenor 2



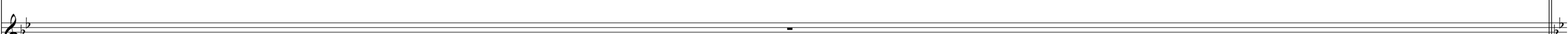
Bari




Tpt. 1



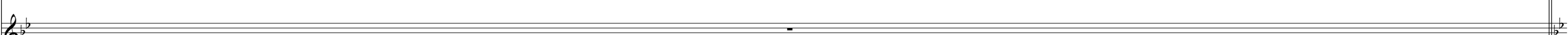
Tpt. 2



Tpt. 3




Tpt. 4




Tbn. 1




Tbn. 2




Tbn. 3



Sousa



Rhy.





## Working In the Coal Mine...Concert Score

Pno / Guit / Drums-Goove+Comp 'til end

[illegible]

138

R

Alto 1

Alto 2

Tenor 1

Tenor 2

Bari

Tpt. 1

Tpt. 2

Tpt. 3

Tpt. 4

Tbn. 1

Tbn. 2

Tbn. 3

Sousa

Rhy.

146 **S**

The musical score for measures 146-153, marked with rehearsal symbol **S**, is written for a large ensemble. The key signature is B-flat major (two flats). The parts include:

- Alto 1:** Melodic line with notes and rests, starting with a forte (*f*) dynamic.
- Alto 2:** Rests throughout the measures.
- Tenor 1:** Melodic line with notes and rests, starting with a forte (*f*) dynamic.
- Tenor 2:** Melodic line with notes and rests, starting with a forte (*f*) dynamic.
- Bari:** Melodic line with notes and rests, starting with a forte (*f*) dynamic.
- Tpt. 1:** Melodic line with notes and rests, starting with a forte (*f*) dynamic.
- Tpt. 2:** Melodic line with notes and rests, starting with a forte (*f*) dynamic.
- Tpt. 3:** Melodic line with notes and rests, starting with a forte (*f*) dynamic.
- Tpt. 4:** Melodic line with notes and rests, starting with a forte (*f*) dynamic.
- Tbn. 1:** Melodic line with notes and rests, starting with a forte (*f*) dynamic.
- Tbn. 2:** Melodic line with notes and rests, starting with a forte (*f*) dynamic.
- Tbn. 3:** Melodic line with notes and rests, starting with a forte (*f*) dynamic.
- Sousa:** Melodic line with notes and rests, starting with a forte (*f*) dynamic.
- Rhy.:** Melodic line with notes and rests, starting with a forte (*f*) dynamic.

154
**T**
21

The musical score for measures 154-161, marked with rehearsal symbol **T**, is written for a large ensemble. The key signature is B-flat major (two flats). The parts are as follows:

- Alto 1:** Melodic line with dynamics *ff*.
- Alto 2:** Rests throughout the measures.
- Tenor 1:** Melodic line with dynamics *ff*.
- Tenor 2:** Melodic line with dynamics *ff*.
- Bari:** Melodic line with dynamics *ff*.
- Tpt. 1:** Melodic line with dynamics *ff*.
- Tpt. 2:** Melodic line with dynamics *ff*.
- Tpt. 3:** Melodic line with dynamics *ff*.
- Tpt. 4:** Melodic line with dynamics *ff*.
- Tbn. 1:** Melodic line with dynamics *ff*.
- Tbn. 2:** Melodic line with dynamics *ff*.
- Tbn. 3:** Melodic line with dynamics *ff*.
- Sousa:** Melodic line with dynamics *ff*.
- Rhy.:** Melodic line with dynamics *ff*.

162

U

Start long fade to end

Alto 1

Alto 2

Tenor 1

Tenor 2

Bari

Tpt. 1

Tpt. 2

Tpt. 3

Tpt. 4

Tbn. 1

Tbn. 2

Tbn. 3

Sousa

Rhy.

170 **V** 23

Alto 1

Alto 2

Tenor 1

Tenor 2

Bari

Tpt. 1

Tpt. 2

Tpt. 3

Tpt. 4

Tbn. 1

Tbn. 2

Tbn. 3

Sousa

Rhy.

Jeronne continues unaccompanied for a while...

178

W

Alto 1

Alto 2

Tenor 1

Tenor 2

Bari

Tpt. 1

Tpt. 2

Tpt. 3

Tpt. 4

Tbn. 1

Tbn. 2

Tbn. 3

Sousa

Rhy.



## Alto 1

## Working In the Coal Mine

Allen Toussaint

♩=140

Drums set 1966 NOLA Lee Dorsey Groove  
Add Bass

4 A 8 B 8

25 C 7 f

33 D

37 ff

41 E Band speak: Lord! I'm so tired...How long can this go on?

49 F Lord! I'm so ti-red How long can this go on? f

53

57 G ff simili

61

## Working In the Coal Mine...Alto 1

65 **H**

*f*

69

73 **I** Alto solo-Open **J** **K** BG-On Cue

97 **L**

*f*

103 **M**

*f*

109

*mf*

113 **N**

*f*

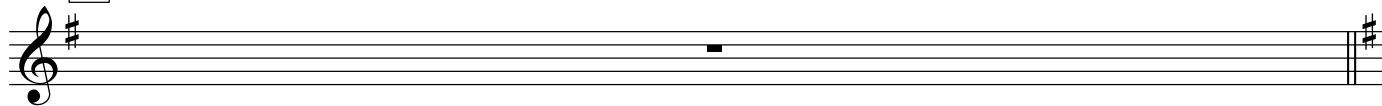
117

119 Open-Vamp and Fade to silence

# Working In the Coal Mine...Alto 1

3

121 **O** Time stops...Jeronne says: "I'm so tired...How long can this go on?"



Gradual crescendo to U, then gradual fade to nothing

122 **P** **A tempo**



138 **R**



142



146 **S**



150



154 **T**



158



162 **U** Start long fade to end



**V**

**W**

Jeronne continues unaccompanied for a while...

## Alto 2

## Working In the Coal Mine

Allen Toussaint

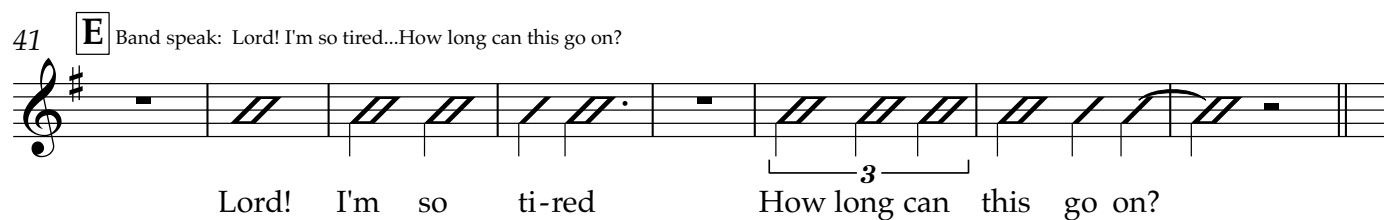
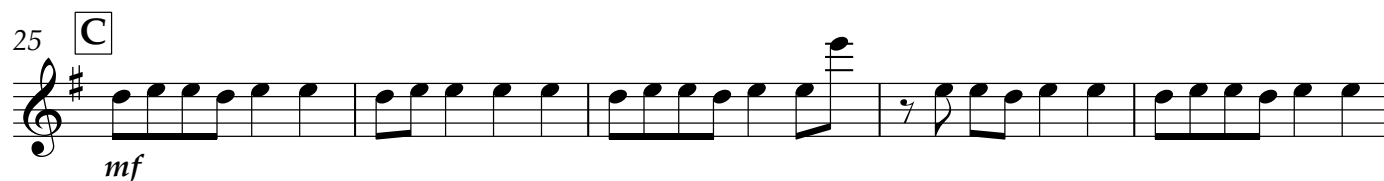
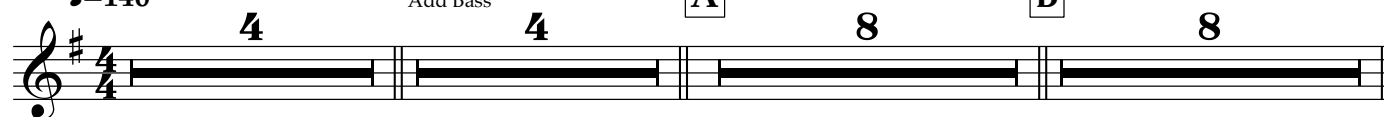
Drums set 1966 NOLA Lee Dorsey Groove

♩=140

Add Bass

A

B



## Working In the Coal Mine...Alto 2

57 **G** *ff* *simili*

61

65 **H** *f*

69

73 **I** *Alto solo-Open*  
*G7(sus4) E13(b9) EbΔ7 D-7*

77 *C#Δ7 C7(sus4) B7(+9)*

81 **J** *E-7 C#7(+9) CΔ7 B7(+9)*

85 *BbΔ7 A7(sus4) G#7(+9) C#-11 C7(sus4) CΔ7(#11)*

89 **K** *BG-On Cue*  
*G7(sus4) E13(b9) EbΔ7 D-7*

# Working In the Coal Mine...Alto 2

3

93 C<sup>#</sup>Δ7 C7(sus4) B7(+9)

97 **L** E-7 C<sup>#</sup>7(+9)<sub>+5</sub> CΔ7 B7(+9)

101 B<sup>b</sup>Δ7 A7(sus4) G<sup>#</sup>7(+9)<sub>+5</sub> C<sup>#</sup>-11 C7(sus4) CΔ7(#11)

105 **M** G7(sus4) E13(b9) E<sup>b</sup>Δ7 D-7

109 C<sup>#</sup>Δ7 C7(sus4) B7(+9)<sub>+5</sub>

113 **N** E-7 C<sup>#</sup>7(+9)<sub>+5</sub> CΔ7 B7(+9)

117 B<sup>b</sup>Δ7 A7(sus4) G<sup>#</sup>7(+9)<sub>+5</sub> C<sup>#</sup>-11 Open-Vamp and Fade to silence C7(sus4) CΔ7(#11)

121 **O** Time stops...Jeronne says: "I'm so tired...How long can this go on?"

4

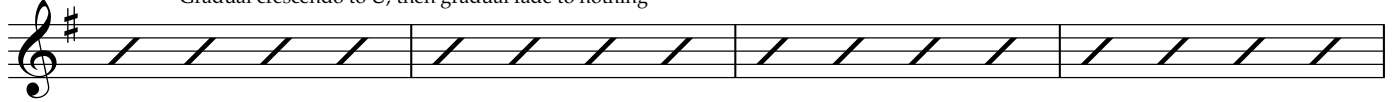
**P****A tempo**

## Working In the Coal Mine...Alto 2

122

G<sup>7</sup>

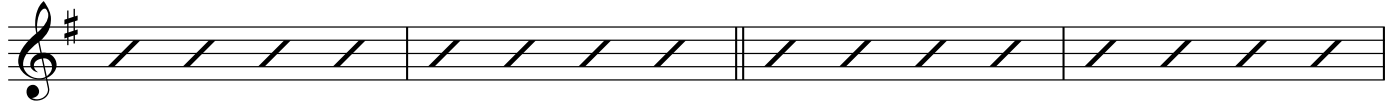
Gradual crescendo to U, then gradual fade to nothing



126



130

**Q**

134



138

**R**

142



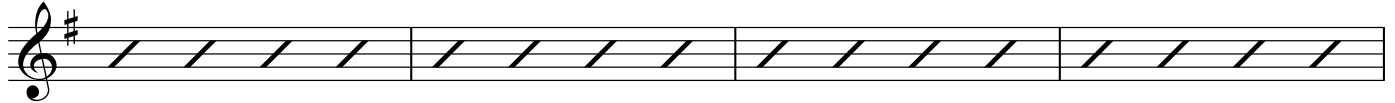
146

**S**

150



154

**T**

158



162

**U**

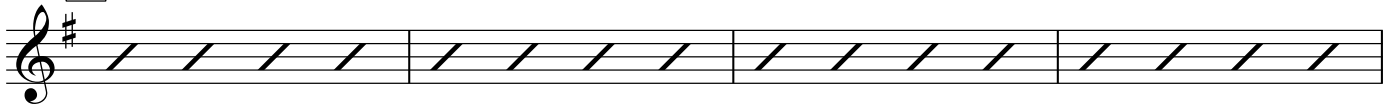
Start long fade to end



166



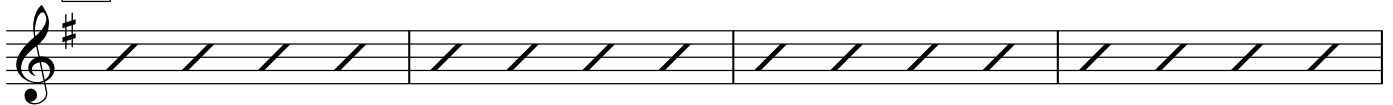
170

**V**

174



178

**W**

182

Jerome continues unaccompanied for a while...





Tenor 1

# Working In the Coal Mine

Allen Toussaint

$\text{♩} = 140$  Drums set 1966 NOLA Lee Dorsey Groove

Add Bass

**4** **4**

9 **A** (under bone 1)  
*mf*

13 *f*

17 **B**

21

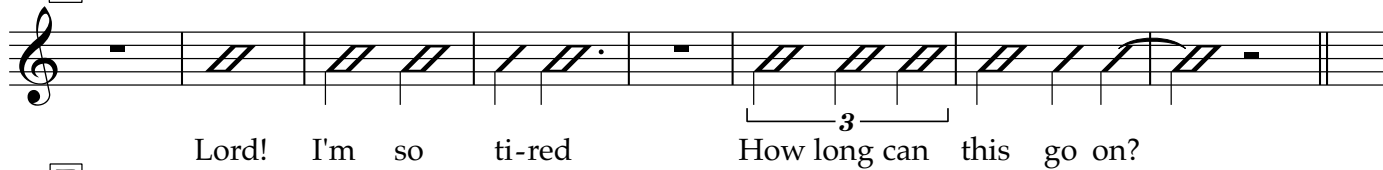
25 **C**  
*mf*

29 *f*

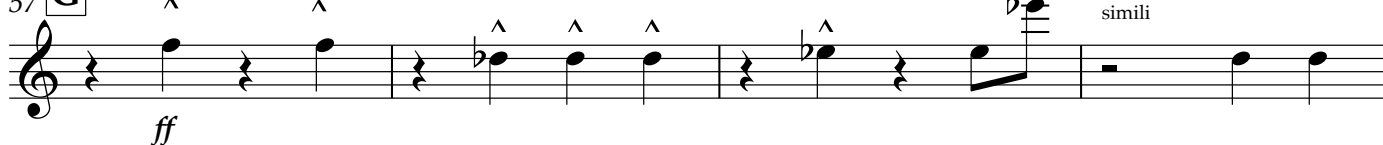
33 **D**

37 *f*

## Working In the Coal Mine...Tenor 1

41 **E** Band speak: Lord! I'm so tired...How long can this go on?49 **F**

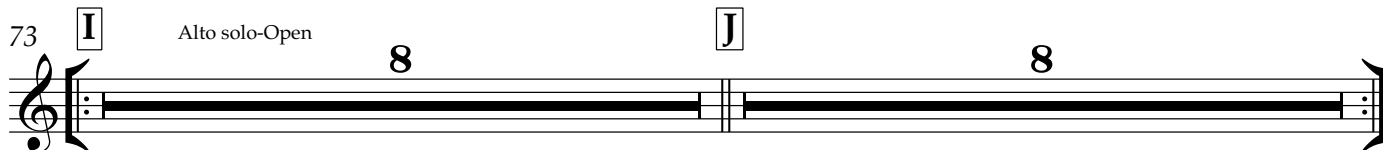
53

57 **G**

61

65 **H**

69

73 **I** Alto solo-Open89 **K** BG-On Cue

93

97 **L**

101

105 **M**

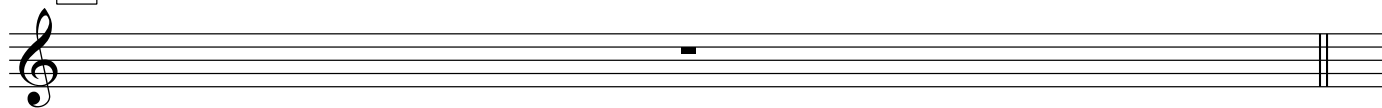
109

113 **N**

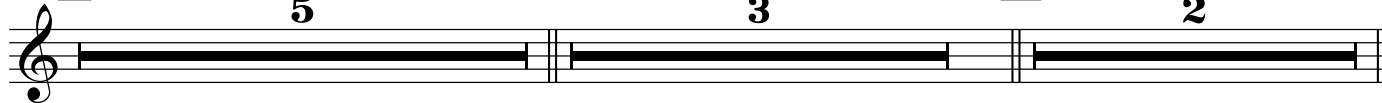
117



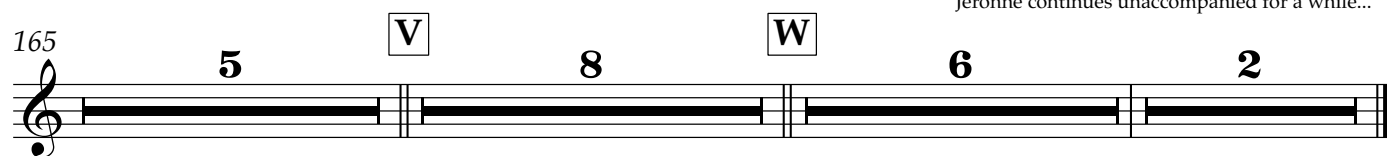
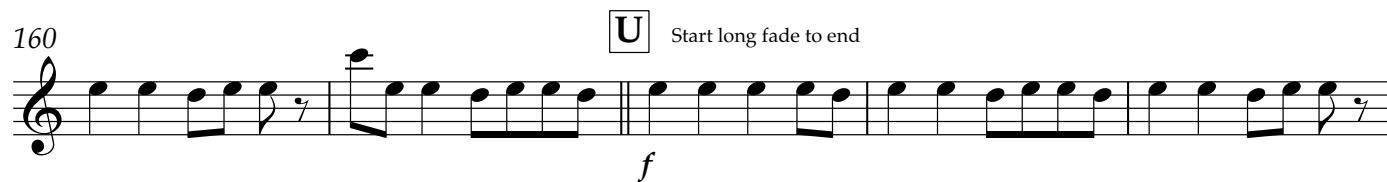
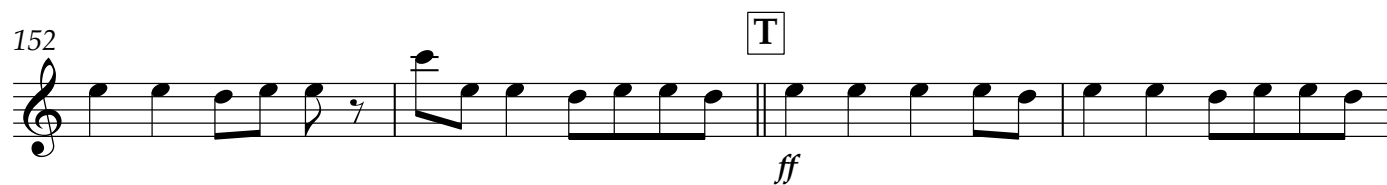
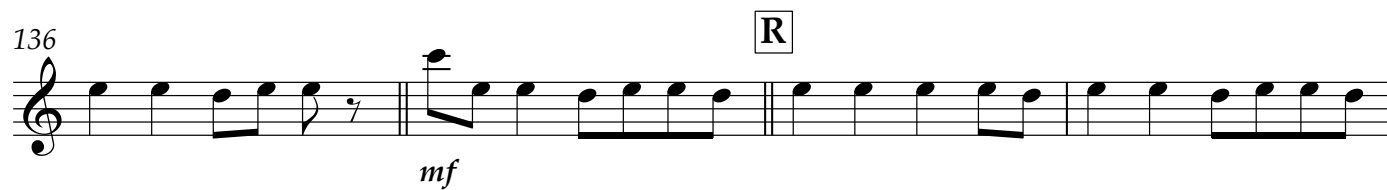
Open-Vamp and Fade to silence

121 **O** Time stops...Jeronne says: "I'm so tired...How long can this go on?"**A tempo**

Gradual crescendo to U, then gradual fade to nothing

122 **P****Q**

## Working In the Coal Mine...Tenor 1



Tenor 2

# Working In the Coal Mine

Allen Toussaint

♩=140

Drums set 1966 NOLA Lee Dorsey Groove

Add Bass

4 A 8 B 8

25 C

30 D

35

41 E Band speak: Lord! I'm so tired...How long can this go on?

Lord! I'm so ti-red How long can this go on?

49 F

54 G

59

## Working In the Coal Mine...Tenor 2

65 **H** *ff*

69

73 **I** Alto solo-Open **J**

89 **K** BG-On Cue *mp* 3

93

97 **L** *f*

101

105 **M** *f* 3

109 *mf*

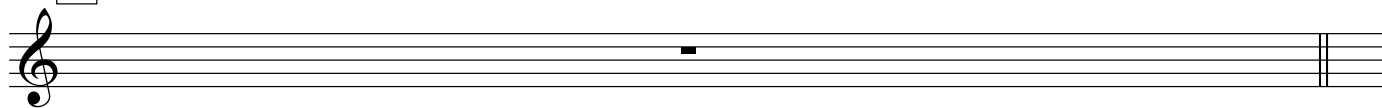
113 **N** *f*

117 Open-Vamp and Fade to silence

# Working In the Coal Mine...Tenor 2

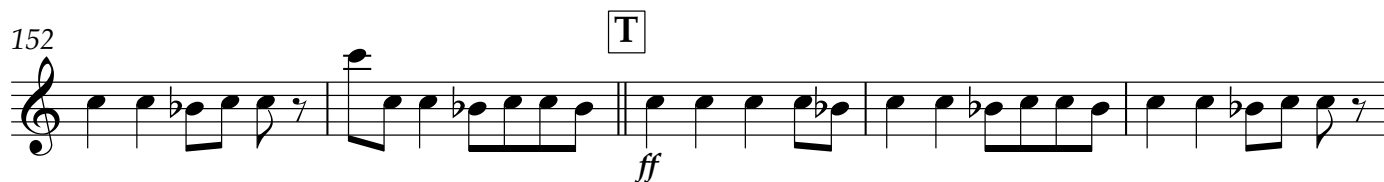
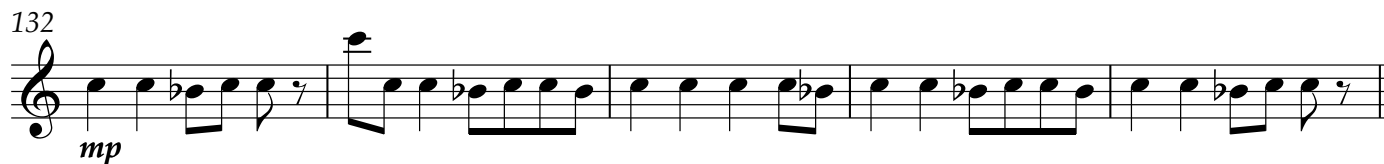
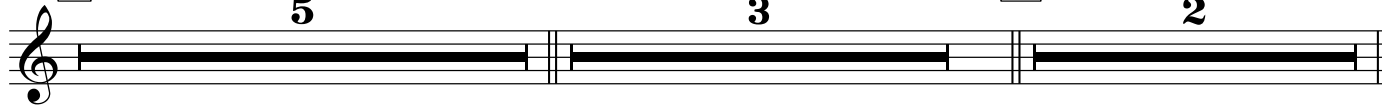
3

121 **O** Time stops...Jeronne says: "I'm so tired...How long can this go on?"



Gradual crescendo to U, then gradual fade to nothing

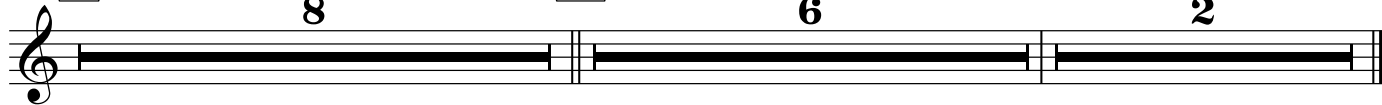
122 **P** A tempo



162 **U** Start long fade to end



170 **V** **W** Jeronne continues unaccompanied for a while...



Bari

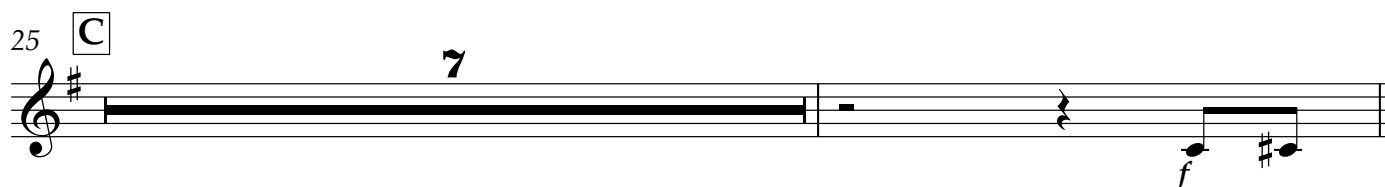
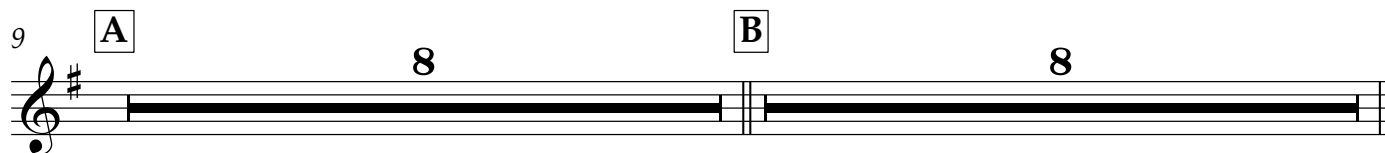
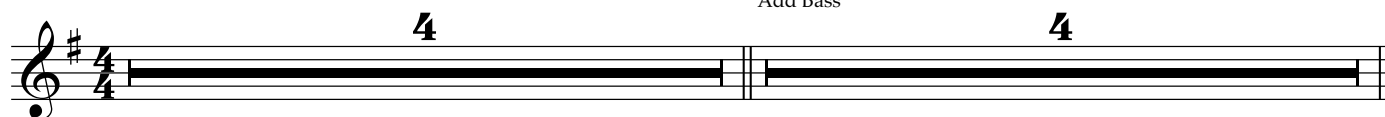
# Working In the Coal Mine

Allen Toussaint

$\text{♩} = 140$

Drums set 1966 NOLA Lee Dorsey Groove

Add Bass





## Working In the Coal Mine...Bari

57 **G**

*ff*

61

65 **H**

*ff*

69

73 **I** Alto solo-Open **J**

*ff*

89 **K** BG-On Cue

*mp*

93

97 **L**

101

105 **M**

*f*

109

*mf*

113 **N**

*f*

117

Open-Vamp and Fade to silence

121 **O** Time stops...Jeronne says: "I'm so tired...How long can this go on?"

122 **P** **A tempo**

*p*

126

130 **Q**

*mp*

134

*mf*

## Working In the Coal Mine...Bari

138 **R**

142

146 **S**

150

154 **T**

158

162 **U** Start long fade to end

166

170 **V**

174



178

W



182

Jeronne continues unaccompanied for a while...



Trumpet 1

# Working In the Coal Mine

Allen Toussaint

Drums set 1966 NOLA Lee Dorsey Groove

**4** **4** **8** **8**

**A** **B**

25 **C** **7** *f*

**D**

33

37 *ff*

41 **E** Band speak: Lord! I'm so tired...How long can this go on?

Lord! I'm so ti-red How long can this go on?

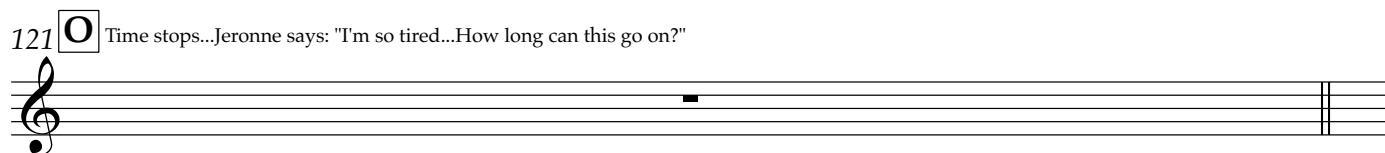
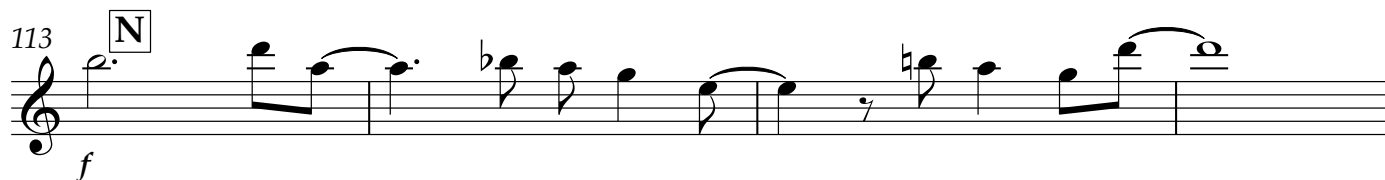
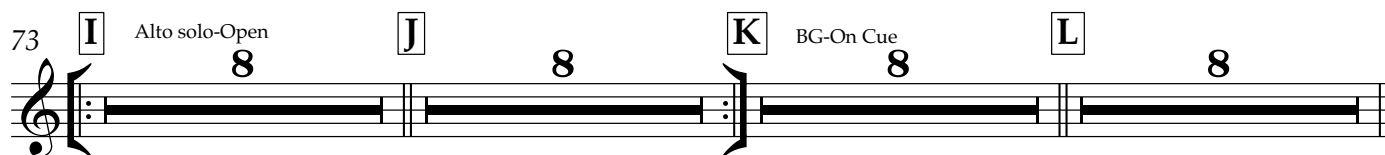
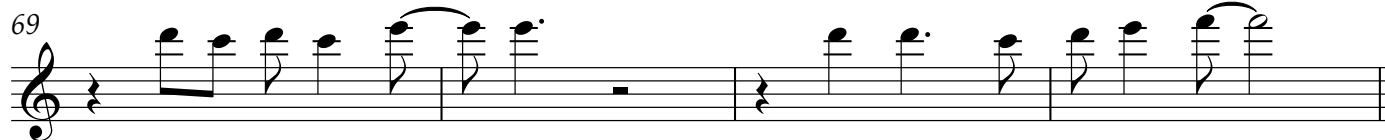
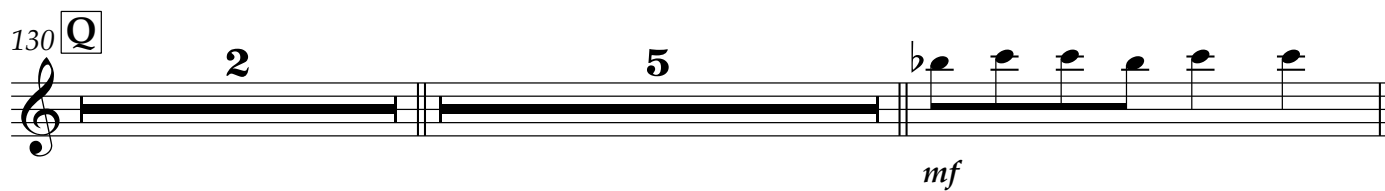
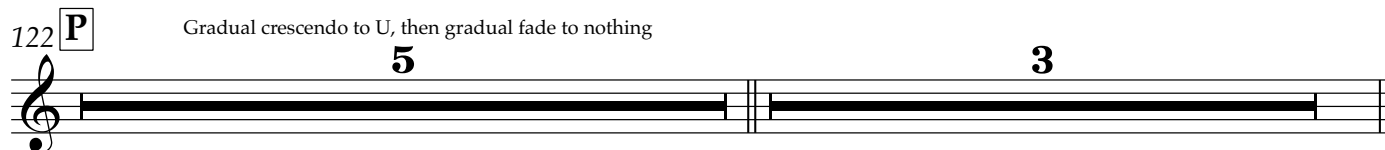
49 **F** **8**

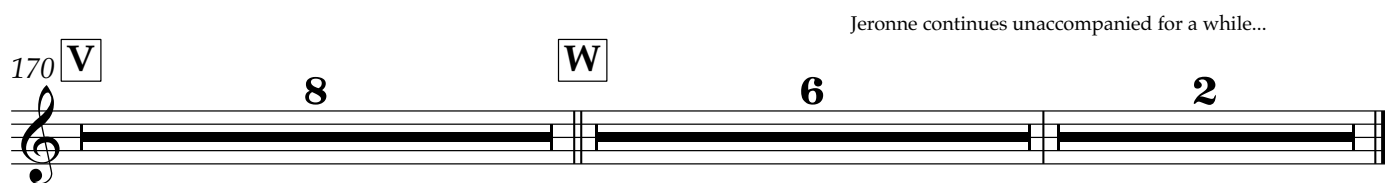
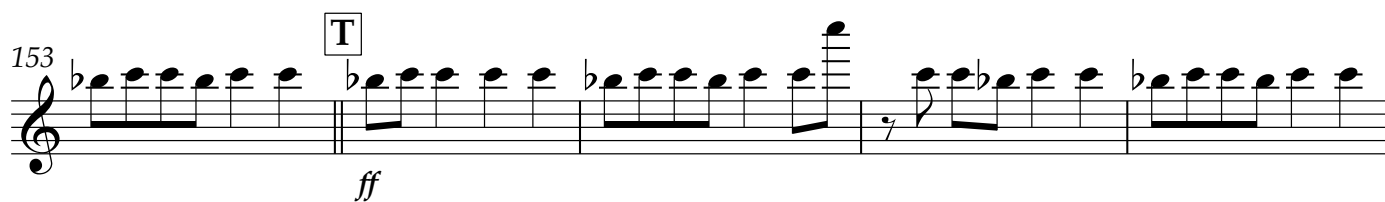
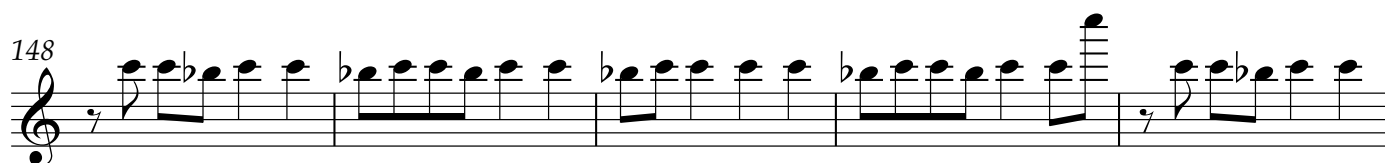
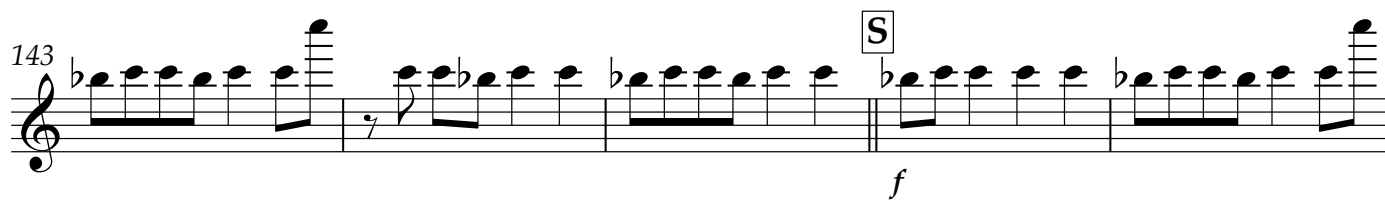
57 **G** *ff*

61

65 **H** *f*

## Working In the Coal Mine...Trumpet 1

**A tempo**



Trumpet 2

# Working In the Coal Mine

Drums set 1966 NOLA Lee Dorsey Groove

Allen Toussaint

$\text{♩} = 140$  **4** **4** **8** **8**

Add Bass

**A** **B**

25 **C**

*f*

29

**D**

*f*

33

37

*f*

41 **E** Band speak: Lord! I'm so tired...How long can this go on?

49 **F**

Lord! I'm so ti-red How long can this go on?

**8**

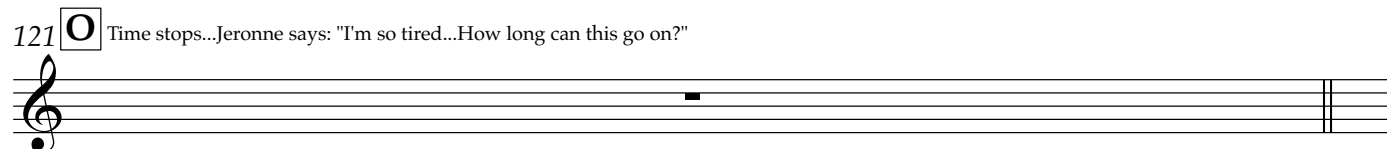
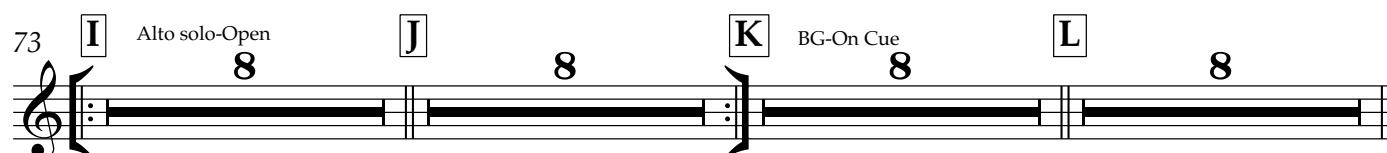
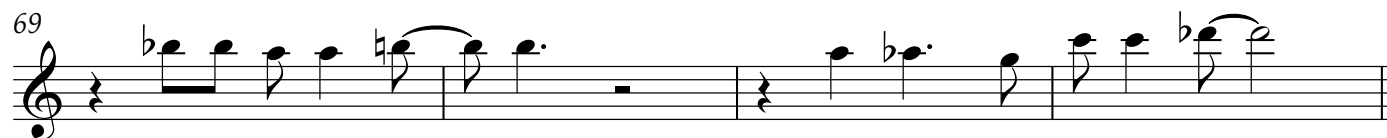
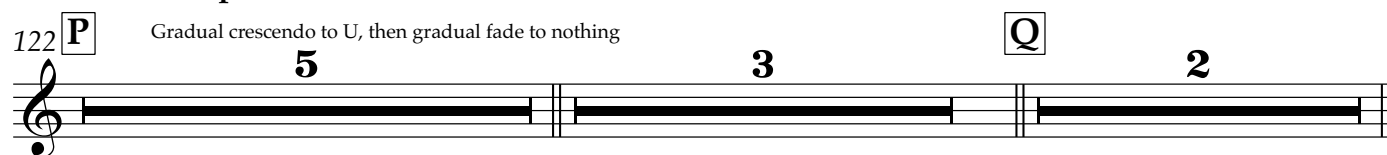
57 **G**

*ff*

61



## Working In the Coal Mine...Trumpet 2

**A tempo**

## Working In the Coal Mine...Trumpet 2

3

138 **R**

142

146 **S**

150

154 **T**

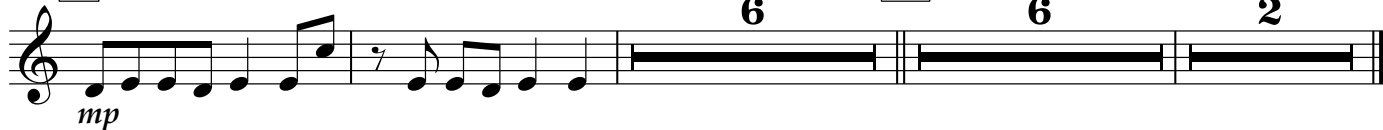
158

162 **U** Start long fade to end

166



Jeronne continues unaccompanied for a while...

170 **V****W**

6

6

2

Trumpet 3

# Working In the Coal Mine

Allen Toussaint

Drums set 1966 NOLA Lee Dorsey Groove

**4** **4** **8** **8**

**A** **B**

25 **C** **7** *f*

**D**

33

37 *f*

41 **E** Band speak: Lord! I'm so tired...How long can this go on?

Lord! I'm so ti-red How long can this go on?

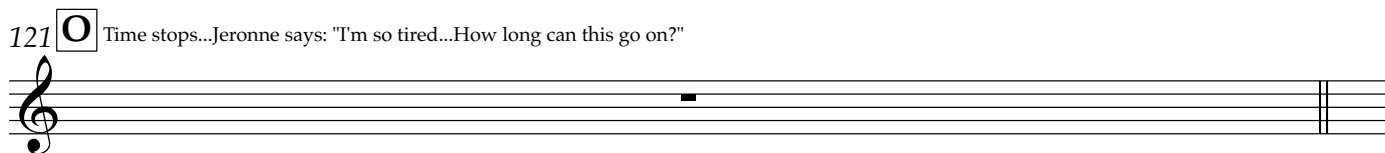
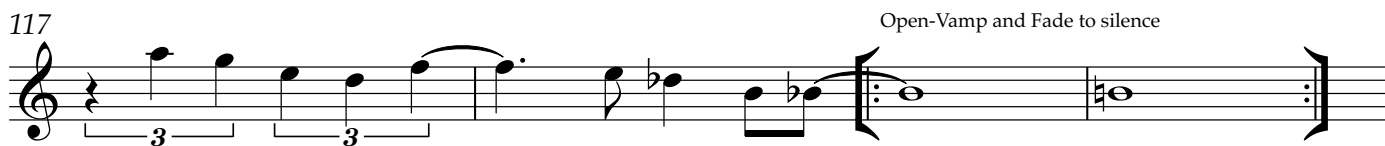
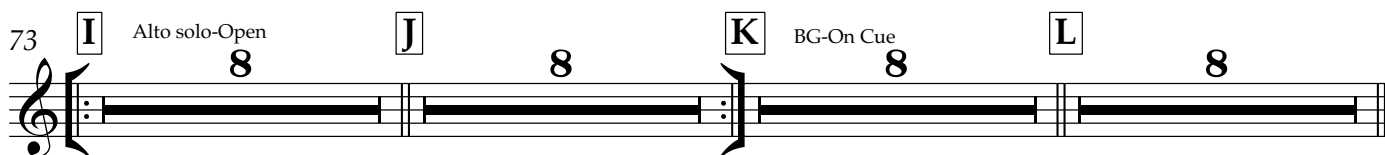
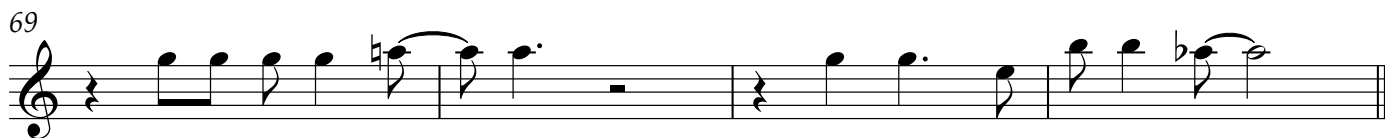
49 **F** **8**

57 **G** *ff*

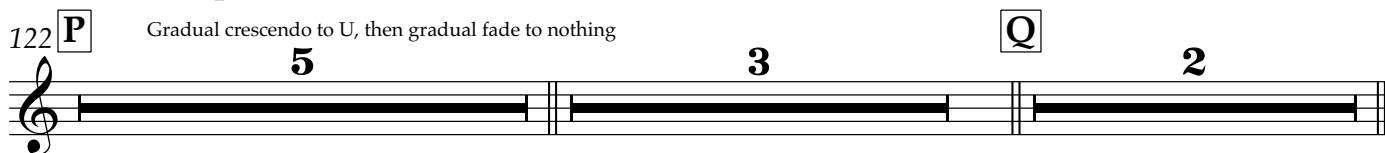
61

65 **H** *f*

## Working In the Coal Mine...Trumpet 3



**A tempo**



## Working In the Coal Mine...Trumpet 3

3

143



148



153



158

162 **U**

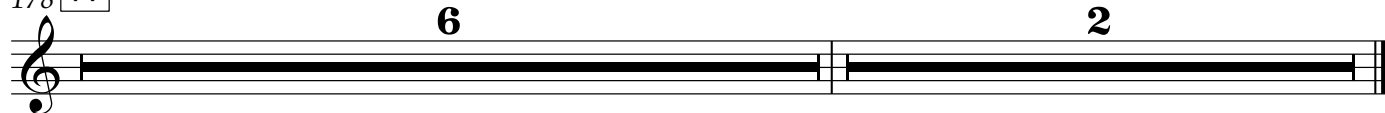
Start long fade to end



166

170 **V**

Jeronne continues unaccompanied for a while...

178 **W**

Trumpet 4

# Working In the Coal Mine

Drums set 1966 NOLA Lee Dorsey Groove

Allen Toussaint

$\text{♩} = 140$  **4** **4** **A** **8** **B** **8**

Add Bass

25 **C** **7**

**D** *f*

33

37

*f*

41 **E** Band speak: Lord! I'm so tired...How long can this go on?

Lord! I'm so ti-red How long can this go on?

49 **F** **8**

57 **G** *ff*

61

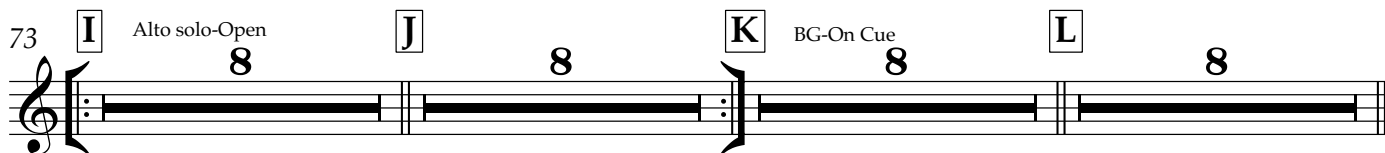
65 **H** *f*

## Working In the Coal Mine...Trumpet 4

69



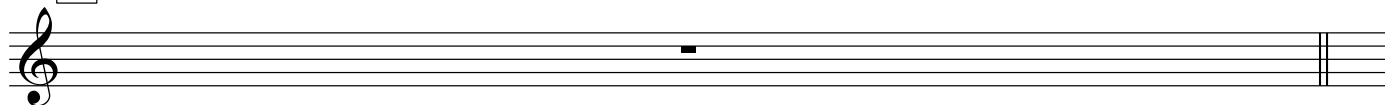
73

105 **M**

109

113 **N**

117

121 **O****A tempo**122 **P****Q**

132

138 **R**

# Working In the Coal Mine...Trumpet 4

3

143 S

*f*

148

153 T

*ff*

158

162 U Start long fade to end

*f* *mf*

166 V

*mp*

172

*p* *pp*

Jeronne continues unaccompanied for a while...

178 W

5 2



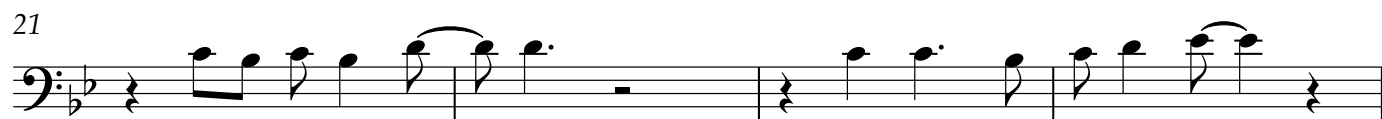
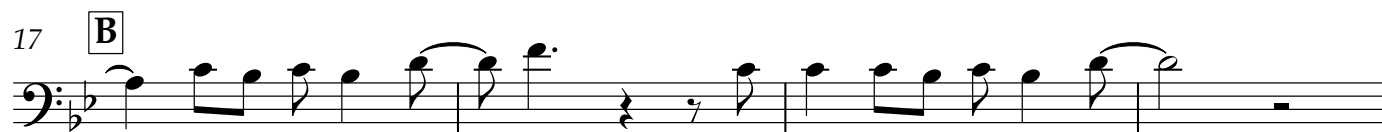
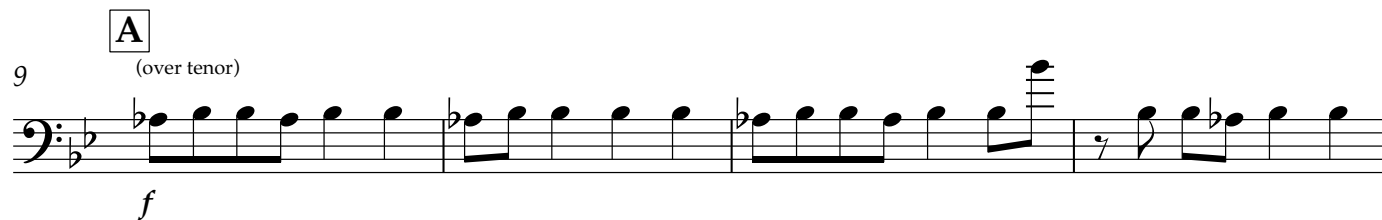
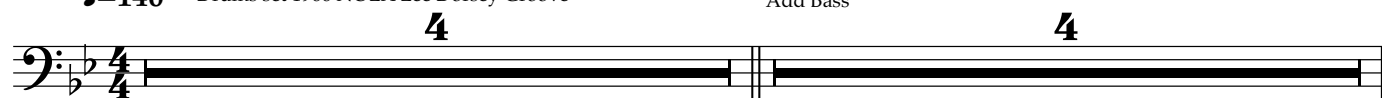
## Trombone 1

## Working In the Coal Mine

Allen Toussaint

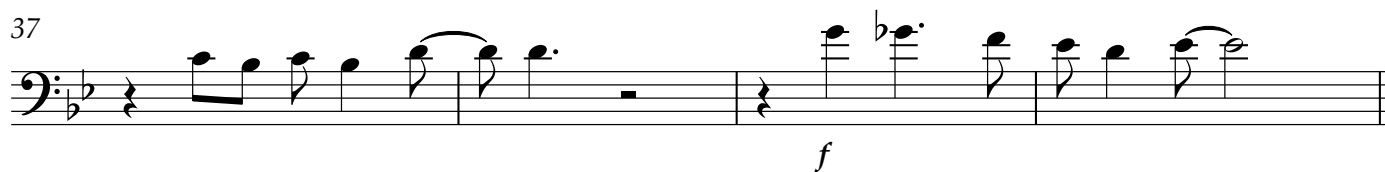
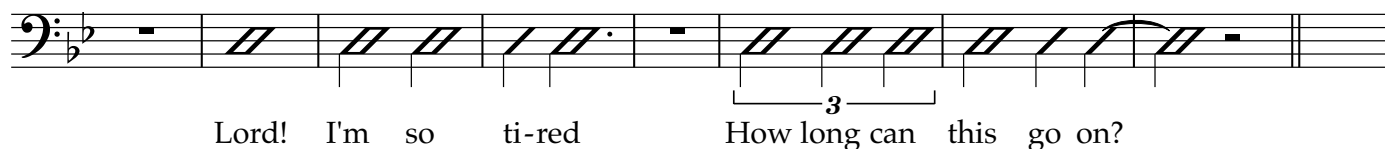
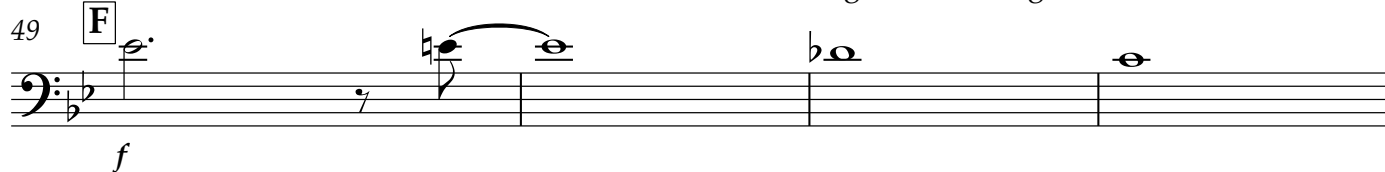
♩=140 Drums set 1966 NOLA Lee Dorsey Groove

Add Bass

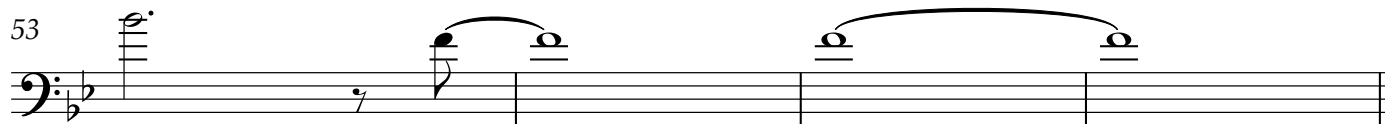
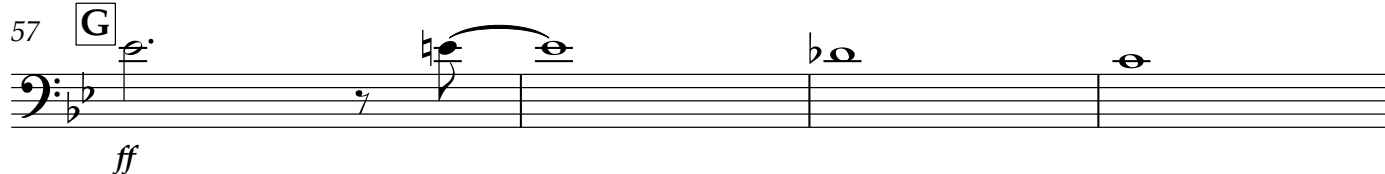


## Working In the Coal Mine...Trombone 1

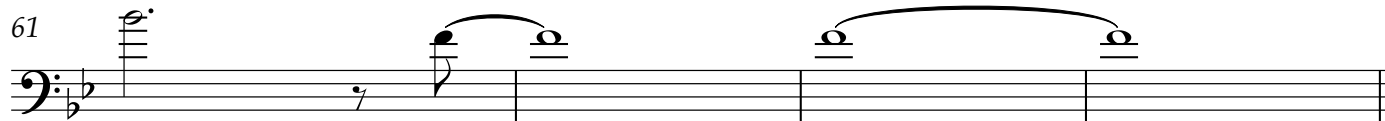
37

41 **E** Band speak: Lord! I'm so tired...How long can this go on?49 **F**

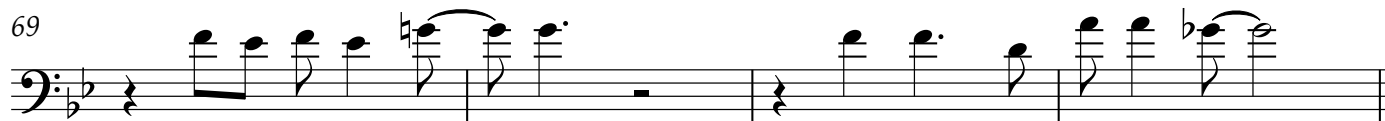
53

57 **G**

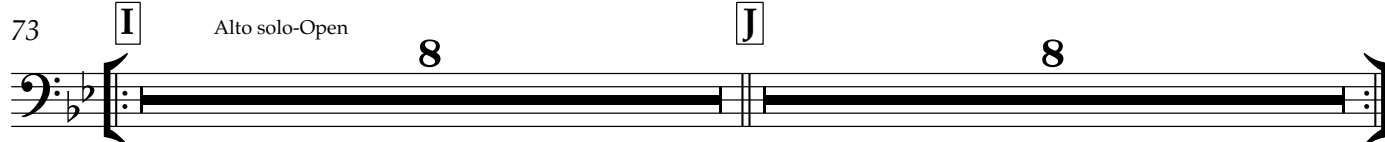
61

65 **H**

69

73 **I**

Alto solo-Open



Working In the Coal Mine...Trombone 1

3


89 **K** BG-On Cue

*mp*

93

93

Bass clef, B-flat major, 4/4 time. The melody starts on G2, moves to F2, then G2, and continues with a series of eighth and quarter notes, ending on G2.

97 L 

101

Exercise 101 is a short piece in bass clef, 3/4 time, with a key signature of two flats. The melody is written on a single staff and consists of 10 measures. It begins with a quarter rest, followed by a triplet of eighth notes (G2, F2, E2), another triplet of eighth notes (D2, C2, B1), and a quarter note (A1). The second measure contains a quarter note (G2), a quarter note (F2), and a quarter note (E2). The third measure contains a quarter note (D2), a quarter note (C2), and a quarter note (B1). The fourth measure contains a quarter note (A1), a quarter note (G2), and a quarter note (F2). The fifth measure contains a quarter note (E2), a quarter note (D2), and a quarter note (C2). The sixth measure contains a quarter note (B1), a quarter note (A1), and a quarter note (G2). The seventh measure contains a quarter note (F2), a quarter note (E2), and a quarter note (D2). The eighth measure contains a quarter note (C2), a quarter note (B1), and a quarter note (A1). The ninth measure contains a quarter note (G2), a quarter note (F2), and a quarter note (E2). The tenth measure contains a quarter note (D2), a quarter note (C2), and a quarter note (B1).

[illegible]

109

*mf*

113 **N**

*f*

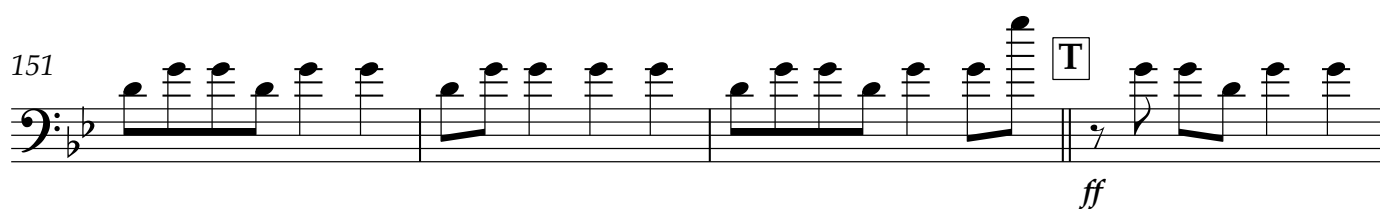
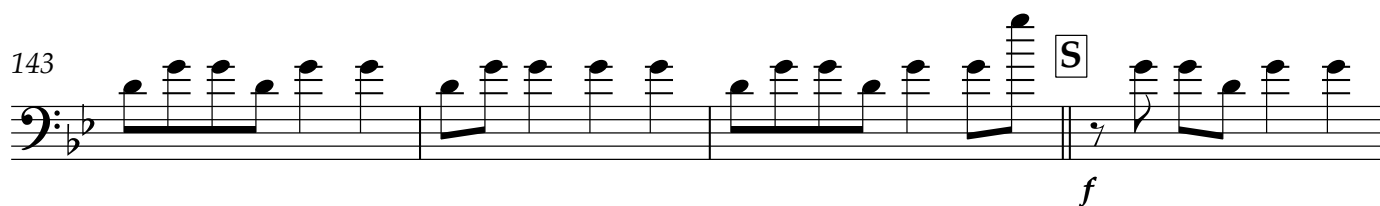
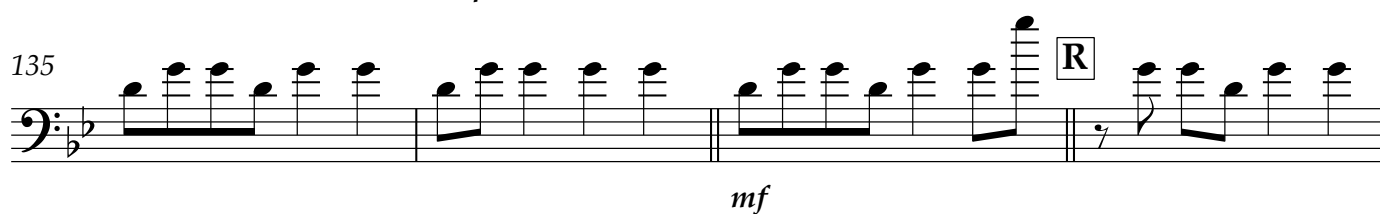
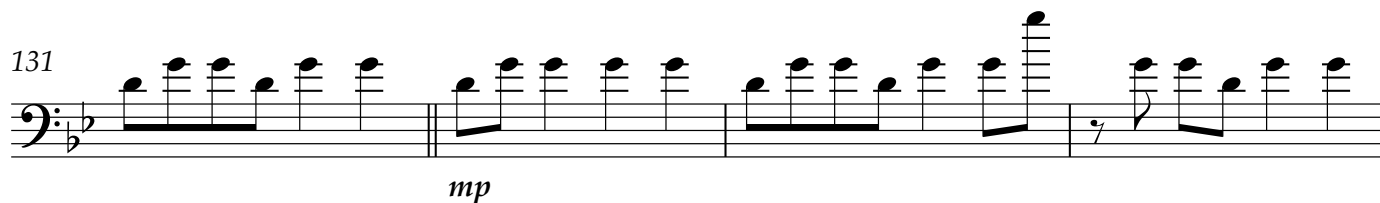
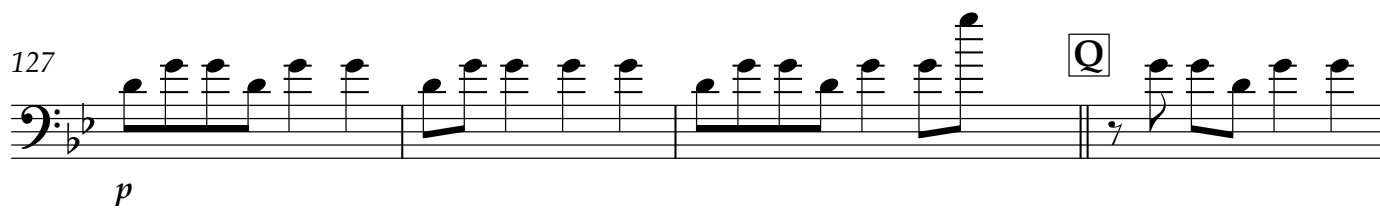
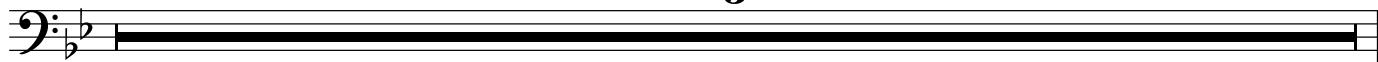
117

Open-Vamp and Fade to silence

121 **O** Time stops...Jeronne says: "I'm so tired...How long can this go on?"

The musical notation for the vocal line is on a single staff with a bass clef and a key signature of one flat (B-flat). The melody begins with a whole note G2, followed by a whole rest. The staff ends with a double bar line and a repeat sign.

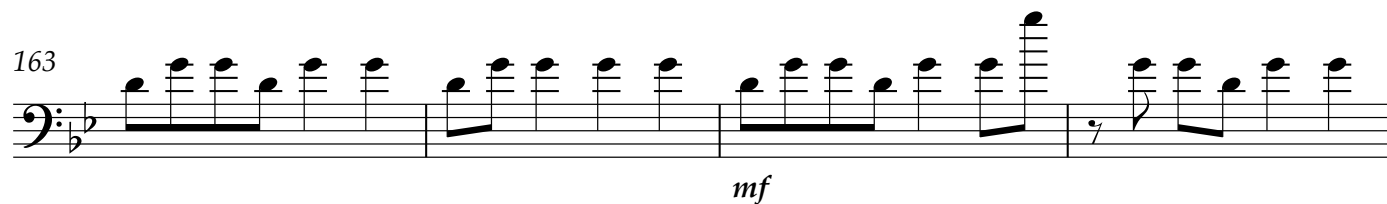
## Working In the Coal Mine...Trombone 1

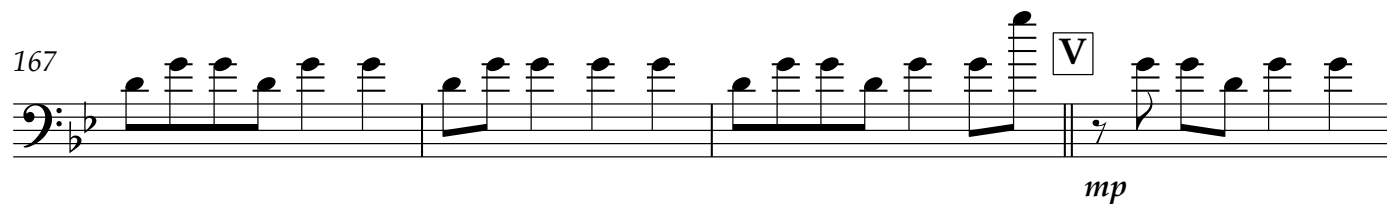
122 **P** **A tempo** Gradual crescendo to U, then gradual fade to nothing**5**

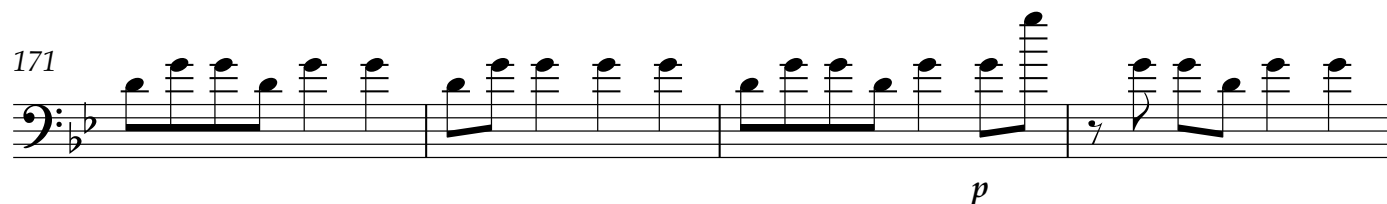
# Working In the Coal Mine...Trombone 1

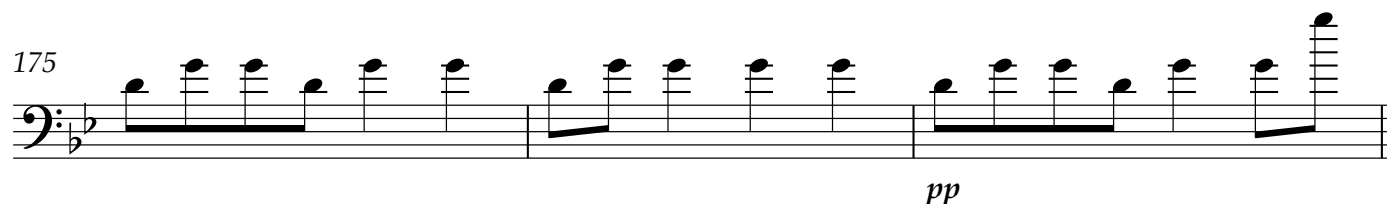
5

159  **U** Start long fade to end  
*f*

163   
*mf*

167  **V**  
*mp*

171   
*p*

175   
*pp*

178 **W**  **5** **2**  
Jeronne continues unaccompanied for a while...

## Trombone 2

## Working In the Coal Mine

Allen Toussaint

♩=140 Drums set 1966 NOLA Lee Dorsey Groove  
Add Bass

**4** **4** **A** **8** **B** **8**

25 **C**

*mf*

29

*f*

33 **D**

37

*f*

41 **E** Band speak: Lord! I'm so tired...How long can this go on?

Lord! I'm so ti-red How long can this go on?

*f*

49 **F**

*f*

## Working In the Coal Mine...Trombone 2

57 **G**

*ff*

65 **H**

*f*

69

73 **I** Alto solo-Open **J**

8 8

89 **K** BG-On Cue

*mp*

3

93

97 **L**

*f*

101

3 3

105 **M**

*f*

3

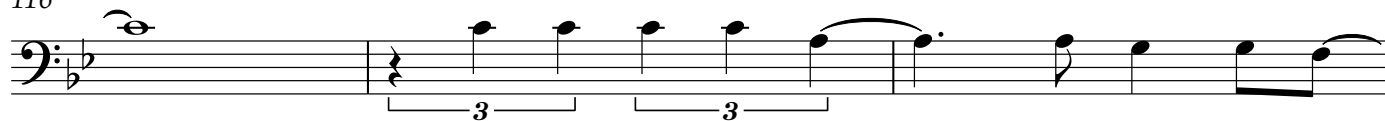
# Working In the Coal Mine...Trombone 2

3

109



116



119

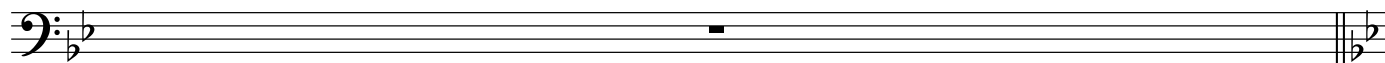
Open-Vamp and Fade to silence



121

**O**

Time stops...Jeronne says: "I'm so tired...How long can this go on?"



122

**P**

Gradual crescendo to U, then gradual fade to nothing

**A tempo**



127

**Q**

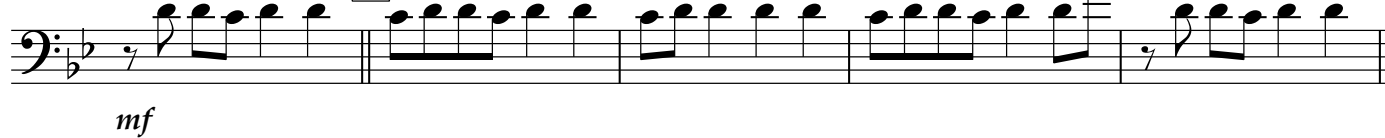


132



137

**R**



142





## Working In the Coal Mine...Trombone 2

146 **S**

*f*

151 **T**

*ff*

156

161 **U** Start long fade to end

*f* *mf*

166 **V**

*mp*

171

*p*

176 **W**

*pp*

Jeronne continues unaccompanied for a while...

181

*pppp*

## Trombone 3

## Working In the Coal Mine

Allen Toussaint

$\text{♩} = 140$  Drums set 1966 NOLA Lee Dorsey Groove  
Add Bass

**A** 4 4 8 8

25 **C** 7 *f*

33 **D**

37 *f*

41 **E** Band speak: Lord! I'm so tired...How long can this go on?

49 **F** Lord! I'm so ti-red How long can this go on? *f*

53

57 **G** *ff*

61

2

## Working In the Coal Mine...Trombone 3

65 **H**

*f*

69

73 **I** Alto solo-Open **J** **K** BG-On Cue **L**

105 **M**

*f*

109

*mf*

113 **N**

*f*

117

Open-Vamp and Fade to silence

121 **O** Time stops...Jeronne says: "I'm so tired...How long can this go on?"

122 **P** Gradual crescendo to U, then gradual fade to nothing **A tempo**

*p*

## Working In the Coal Mine...Trombone 3

3

126



130

**Q***mp*

134

*mf*

138

**R**

142



146

**S***f*

150



154

**T***ff*

158



V.S.

## Working In the Coal Mine...Trombone 3

162 **U** Start long fade to end

*f* *mf*

166

170 **V**

*mp* *p*

174

*pp*

178 **W**

Jeronne continues unaccompanied for a while...

182

*pppp*

# Working In the Coal Mine

Sousaphone

Allen Toussaint

**♩=140** Drums set 1966 NOLA Lee Dorsey Groove  
Add Bass

**4** **A** **8** **B** **8**

25 **C** **7** **D**

35

39

41 **E** Band speak: Lord! I'm so tired...How long can this go on?

49 **F** Lord! I'm so ti-red How long can this go on?

53

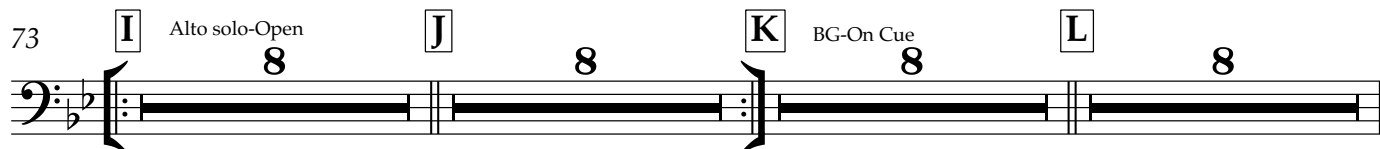
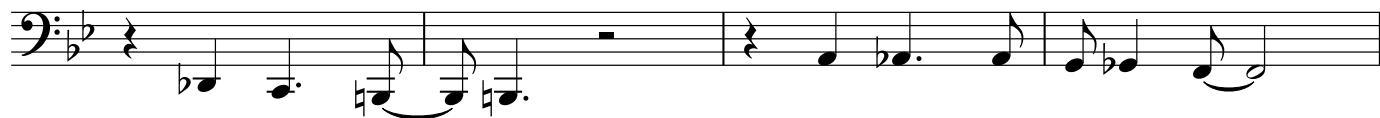
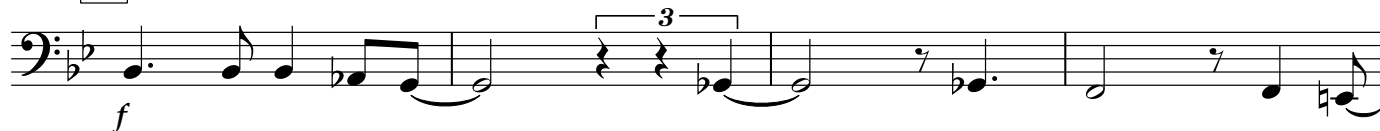
57 **G**

61

## Working In the Coal Mine...Sousaphone

65 **H**

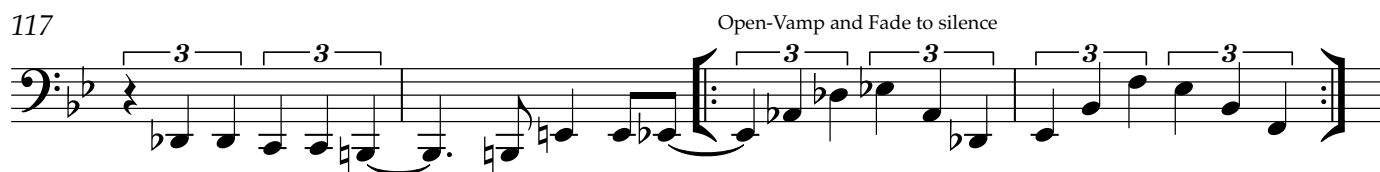
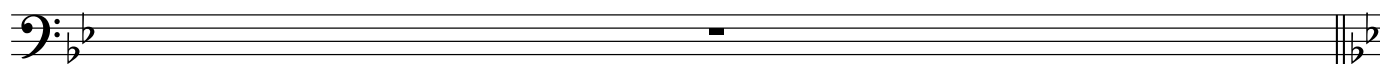
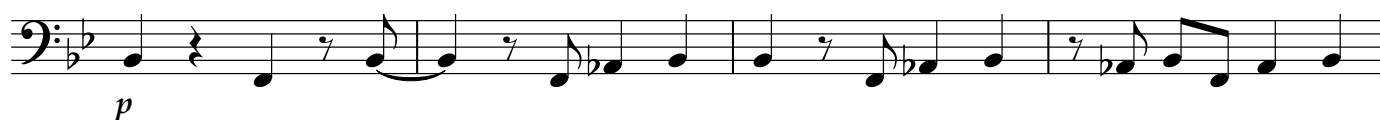
69

105 **M**

109

113 **N**

117

121 **O** Time stops...Jeronne says: "I'm so tired...How long can this go on?"122 **P** A tempo  
Gradual crescendo to U, then gradual fade to nothing





U


$$mf$$


V



*p*



**W**



Jeronne continues unaccompanied for a while...



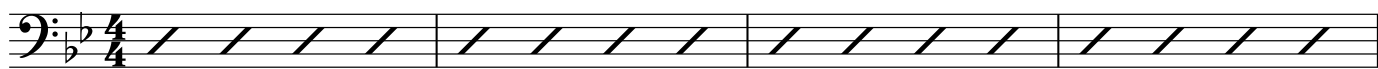
## Rhythm

## Working In the Coal Mine

Allen Toussaint

♩=140

Drums set 1966 NOLA Lee Dorsey Groove

*mf*

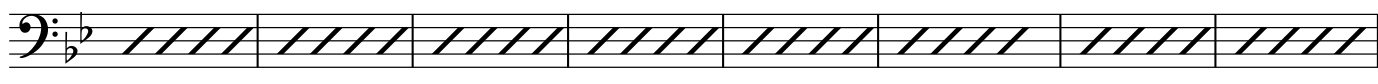
Drums continue groove throughout

5 Add Bass

9 **A** Bb

Piano/Gt Comp

13

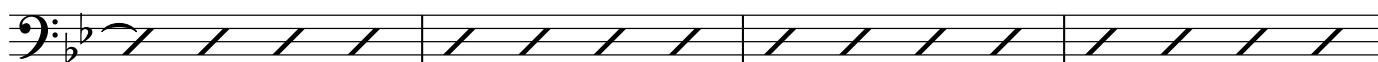
17 **B** F7 Bb F7 Bb F7 Bb F7*f*25 **C** Bb

Piano/Gt Comp

30

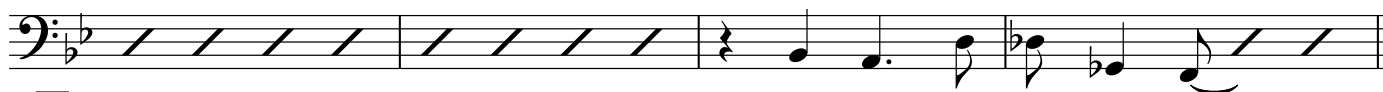


F7

*f*33 **D** Bb F7 Bb

## Working In the Coal Mine...Rhythm

37 F<sup>7</sup> B<sup>b</sup> B<sup>b</sup>13 A<sup>13(+9)</sup> D<sup>7(+9)</sup><sub>+5</sub> D<sup>b</sup>Δ<sup>7</sup> G<sup>b</sup>7<sup>(+9)</sup><sub>+5</sub> B/F

**E**

41 B<sup>b</sup> Band speak: Lord! I'm so tired...How long can this go on?

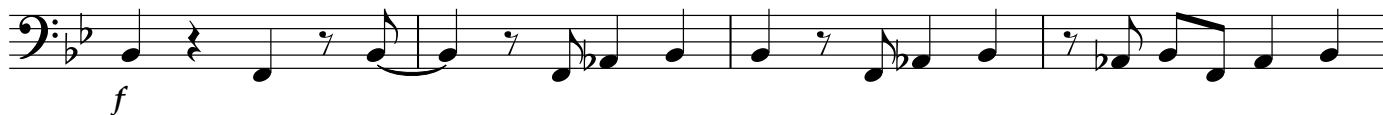


Piano/Gt Comp

45

**F**

49 B<sup>b</sup>7(sus4) G<sup>13(b9)</sup> G<sup>b</sup>Δ<sup>7</sup> F-<sup>7</sup>

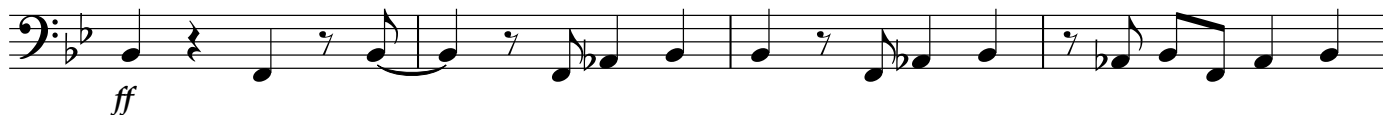


Piano/Gt Comp

53 E<sup>Δ</sup>7(b5) E<sup>b</sup>7(sus4) D<sup>7(+9)</sup><sub>+5</sub>

**G**

57 B<sup>b</sup>7(sus4) G<sup>13(b9)</sup> G<sup>b</sup>Δ<sup>7</sup> F-<sup>7</sup>

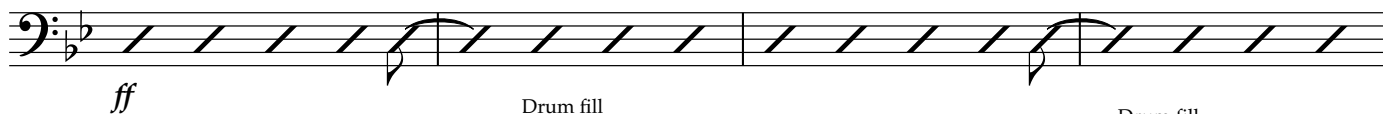


Piano/Gt Comp

61 E<sup>Δ</sup>7(b5) E<sup>b</sup>7(sus4) D<sup>7(+9)</sup><sub>+5</sub>

**H**

65 G-<sup>7</sup> E<sup>7(+9)</sup><sub>+5</sub> E<sup>b</sup>Δ<sup>7</sup> D<sup>+7(+9)</sup>



Drum fill

Drum fill

69 D<sup>b</sup>Δ<sup>7</sup> C<sup>7(sus4)</sup> B<sup>7(+9)</sup> B<sup>b</sup>Δ<sup>7</sup>(#5) A<sup>7(+9)</sup><sub>+5</sub> A<sup>b</sup>7 G-<sup>11</sup> G<sup>b</sup>7<sup>(+9)</sup><sub>+5</sub> B/F



Drum fill

# Working In the Coal Mine...Rhythm

3

I

73  $B\flat 7(sus4)$   $G13(b9)$   $G\flat \Delta 7$   $F-7$   $E\Delta 7$   $E\flat 7(sus4)$   $D7(+9)$

Alto solo-Open

J

81  $G-7$   $E7(+9)$   $E\flat \Delta 7$   $D7(+9)$   $D\flat \Delta 7$   $C7(sus4)$   $B7(+9)$   $E-11$   $E\flat 7(sus4)$   $E\flat \Delta 7(\sharp 11)$

K

89  $B\flat 7(sus4)$   $G13(b9)$   $G\flat \Delta 7$   $F-7$   $E\Delta 7$   $E\flat 7(sus4)$   $D7(+9)$

BG-On Cue

L

97  $G-7$   $E7(+9)$   $E\flat \Delta 7$   $D7(+9)$

*f*

101  $D\flat \Delta 7$   $C7(sus4)$   $B7(+9)$   $E-11$   $E\flat 7(sus4)$   $E\flat \Delta 7(\sharp 11)$

M

105  $B\flat 7(sus4)$   $G13(b9)$   $G\flat \Delta 7$   $F-7$   $E\Delta 7$

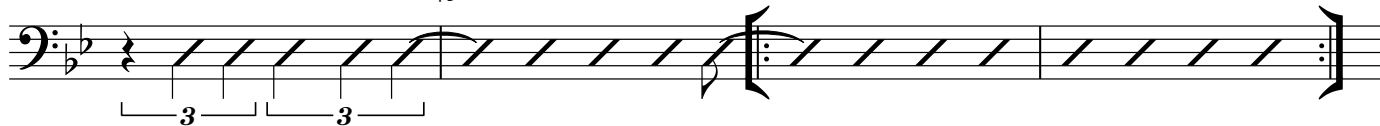
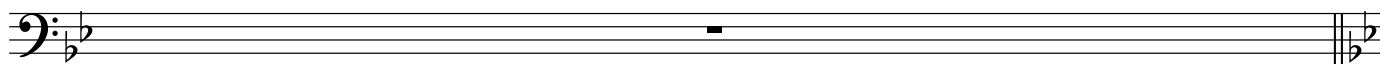
*f*

109  $E\flat 7(sus4)$   $D7(+9)$

*mf*

4 **N**

## Working In the Coal Mine...Rhythm

113 G<sup>-7</sup> E7(+9)<sub>+5</sub> Eb<sup>Δ7</sup> D7(+9)117 Db<sup>Δ7</sup> C7(sus4) B7(+9)<sub>+5</sub> E-11 Eb7(sus4) Eb<sup>Δ7</sup>(#11)121 **O** Time stops...Jeronne says: "I'm so tired...How long can this go on?"**P** A tempo

Gradual crescendo to U, then gradual fade to nothing

122 Bb<sup>7</sup>*p* Pno/Guit/Drums-Gooove+Comp 'til end

127

**Q**

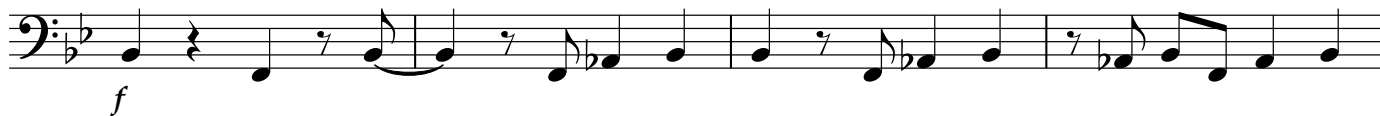
132

*mp*

137

**R***mf*

142

146 **S***f*

150

**T**

155



160

**U**

Start long fade to end



165



170

**V**

175

**W**

180



183

Jeronne continues unaccompanied for a while...

